



People

Origin Green Member companies are working to:



- support local communities
- implement resilient agriculture practices
- seek to develop sustainable food production

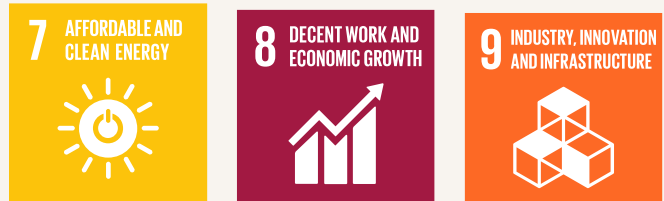
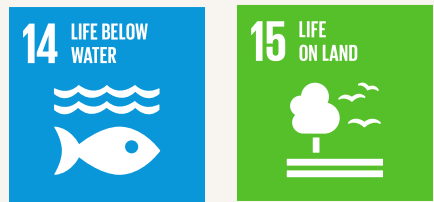


Planet

Origin Green Member companies are working to:



- reduce their water usage
- produce food and drink as sustainably as possible
- protect and enhance marine life



Prosperity

Origin Green Member companies are working to:



- reduce their energy consumption
- creating job opportunities in their local communities
- contributing to sustainable economic growth
- protect and enhance marine life



Partnership

Origin Green Member companies are:



- working collaboratively with other organisations and stakeholders with the common goal of sustainable food production

★ ENVIRONMENT

Emissions

5% reduction in energy consumption per tonne output across electricity and gas by 2025 (electricity reduction based on mains consumption)

Water

To reduce water, use per unit by 10% per KG by 2025 based on 2019-2020 baseline

★ RAW MATERIAL SOURCING

- Maintain farm level QA input at 90%
- Target 80% of key suppliers to hold sustainable/environmental certification for company or product by end 2025

★ SOCIAL SUSTAINABILITY

- Implement Employee Survey on welfare/wellbeing and drive engagement to 75% by 2025.
- Increase donations to community initiatives by 2.5% per year based on 2019 exceptional year.

